





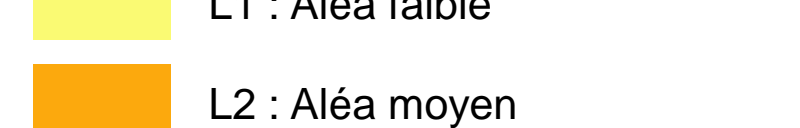
PLAN DE PREVENTION DES RISQUES NATURELS PREVISIBLES

PPR MULTIRISQUES

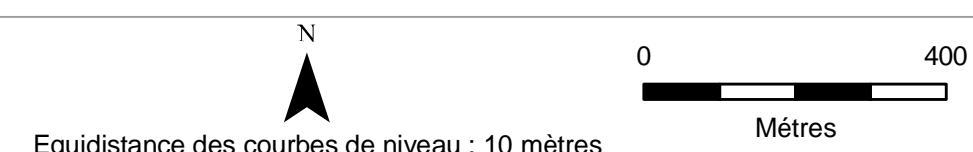
COLLECTIVITE TERRITORIALE DE SAINT-MARTIN

ALÉA LIQUEFACTION

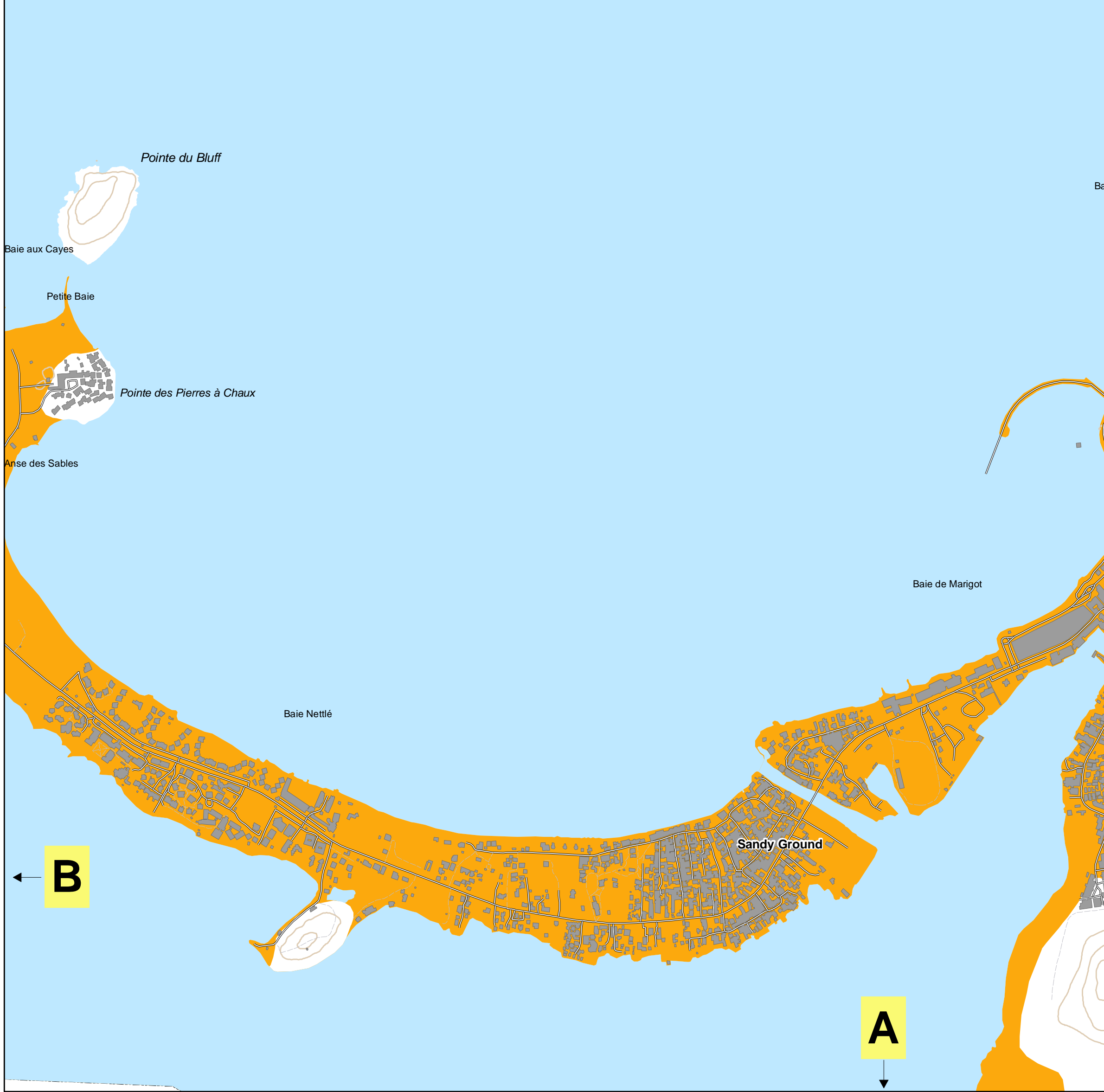
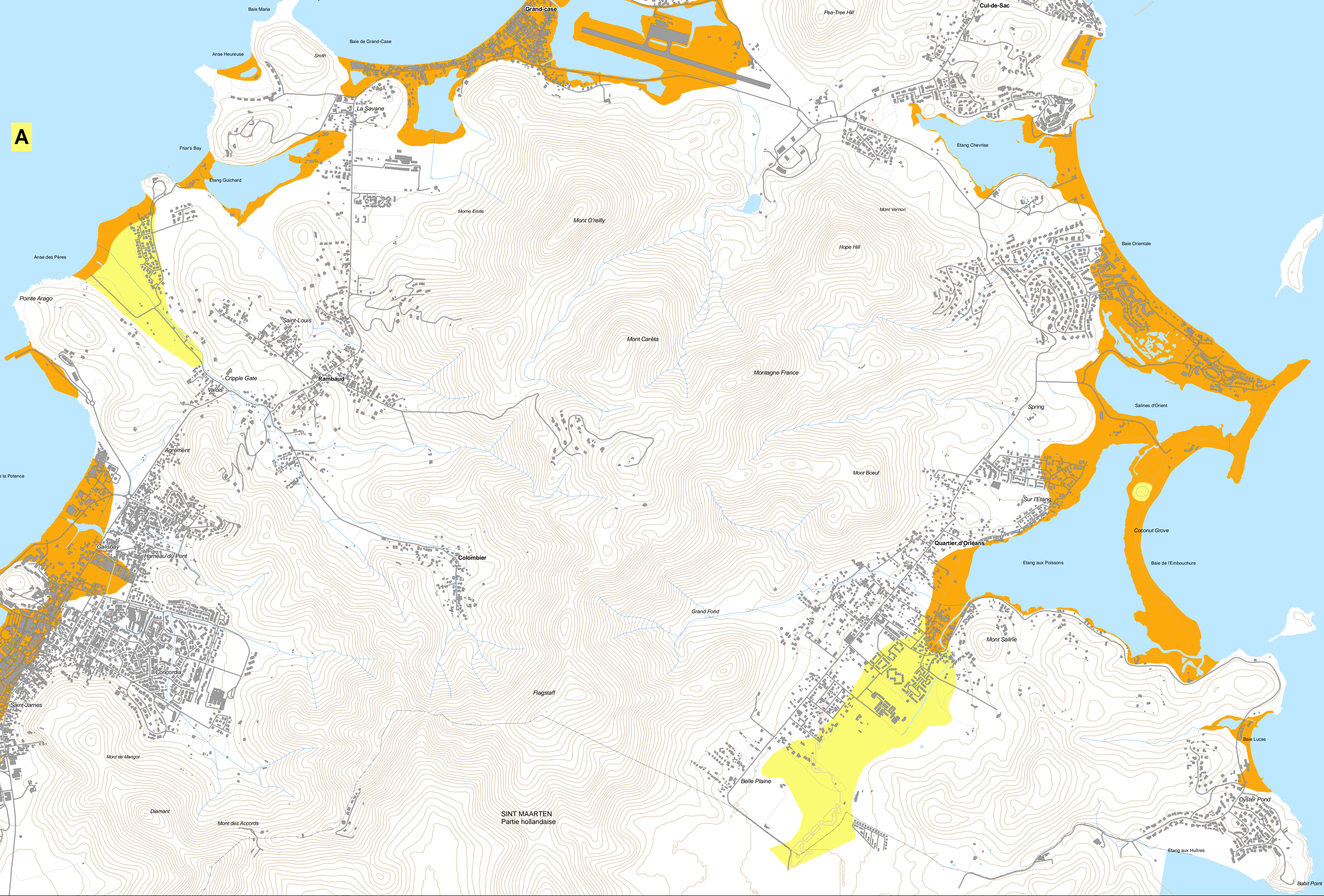
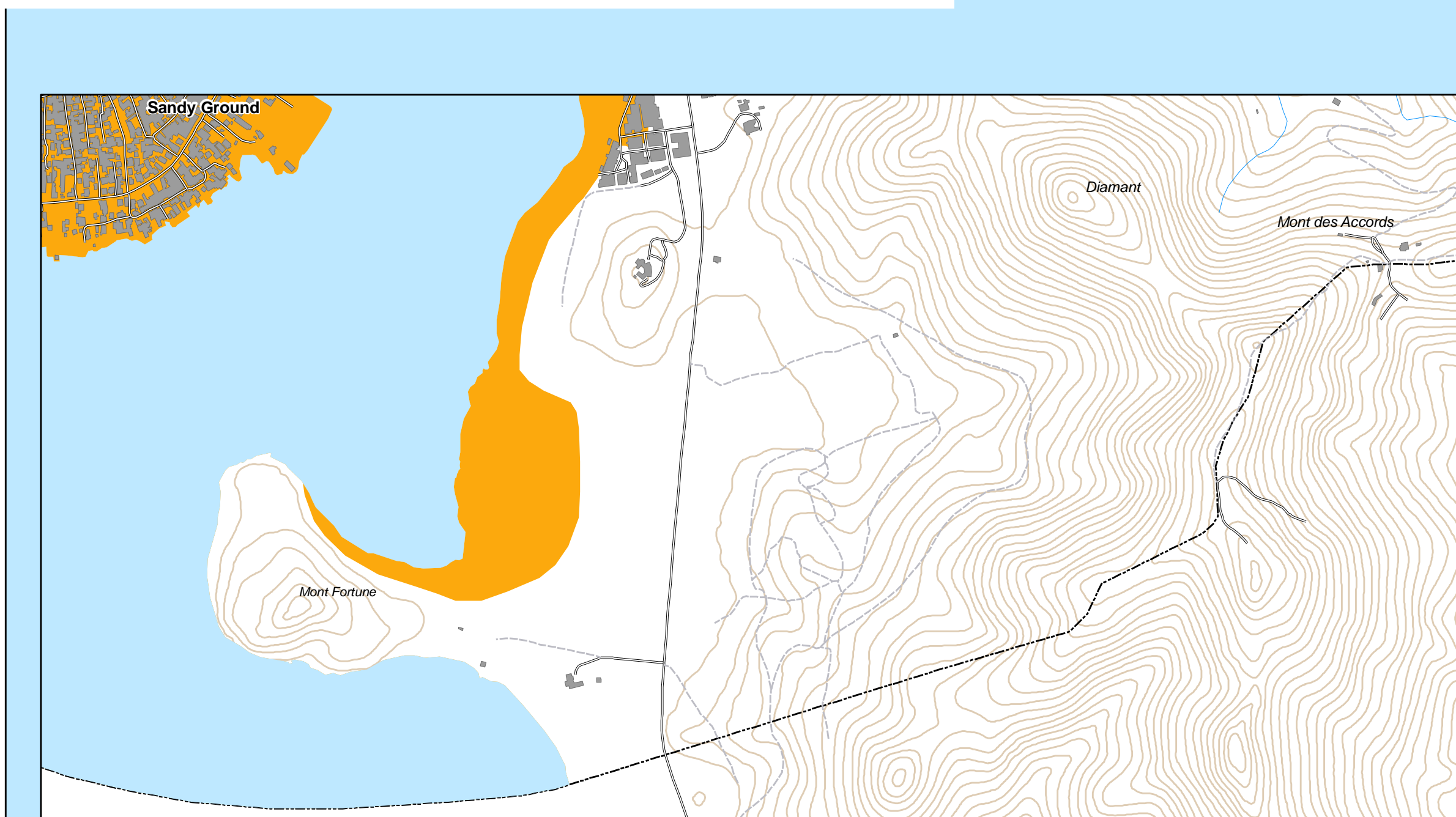
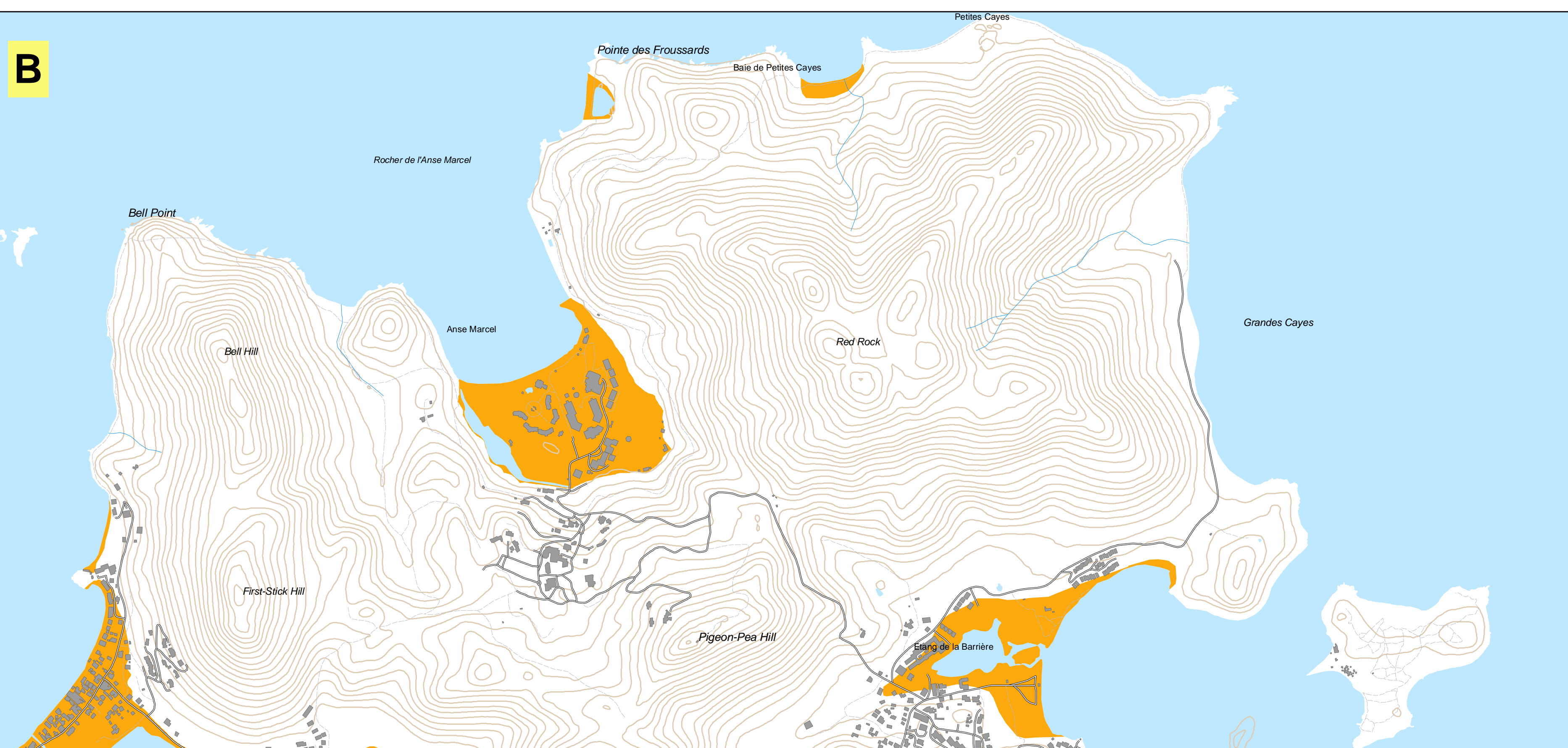
Aléa liquéfaction

-  Considéré comme négligeable
-  L1 : Aléa faible
-  L2 : Aléa moyen

Version : Juin 2008
Echelle : 1/10 000



BD TOPO Pays 1:2, Copyright IGN Paris 2004, Conversion DDE Guadeloupe-GEOTER au 14-11-08



SINT MAARTEN
Partie hollandaise